

THE
BRIGHTONIAN



1939



Preface

THE BRIGHTONIAN

VOLUME III

1939

Published by
The Sophomore Class
of
Brighton High School



We, the class of '41 dedicate this issue of the Brightonian to Miss Lillian Oldham, for the cooperation zeal and interest which she has shown towards us, the students and faculty of Brighton High School.

Her efforts have had no bounds and her pleasing personality along with her cheerful smile, will linger long in our memories.

We wish her all the luck, success and happiness possible, in her life to follow.

May she keep a place in her heart for us, as we will, for her. Her thoughtfulness, kindness and generosity will always remain a sweet memory of happy school days.



We, the staff of the Brightonian, now realize the spirit, ambition and determination the Sophomore Class of '37 must have had to start a year book.

This year the third edition of the Brightonian has given us our first great responsibility. We have tried to take one step further in the improvement of this year's annual and hope the Sophomore Class of next year, to whom the responsibility of next year's annual will pass, will try to do the same.

To choose the staff this year a committee was chosen, first to decide whether the staff would be elected by the students or chosen by a group of teachers. The result was that a group of teachers selected the staff.

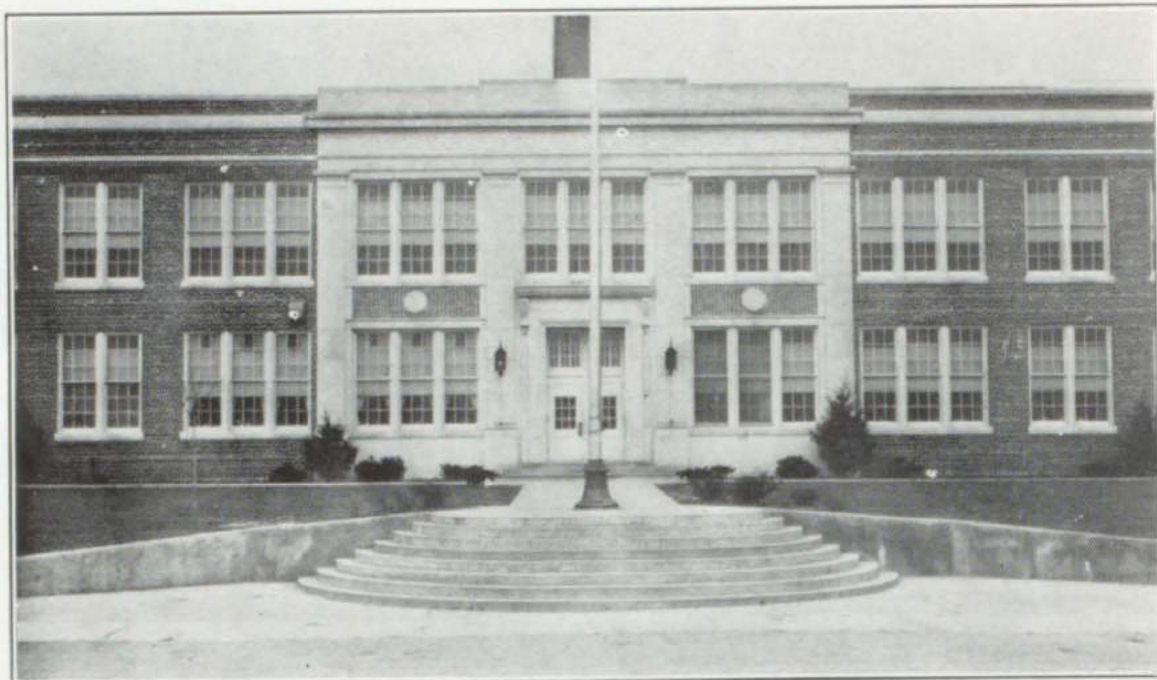
I want to mention now the time, patience, and cooperation of the staff and teachers in the publication of this annual.

The staff wishes to thank the business men for their strong support of the school activities during this past year. We also want to show our appreciation for the cooperation in forwarding the improvement of our school.

By working cooperatively and wholeheartedly in the coming year we hope to partly repay our teachers, and friends for their patience and interest in us.

PRISCILLA LUCE, '41
Editor

◆ Brighton High School ◆



» Board of Education «

MRS. DONALD LEITH, President

MR. R. E. WEEKS, Secretary

MR. L. W. HERBST, Trustee

MR. N. R. MORLAN, Treasurer

MRS. L. L. DANIELLS, Trustee



Where will you be ten years from now? What will you be doing ten years from now?

Any student with a normal mind and a healthy body can and will be doing just what he wishes. The habits and desires you form and cultivate the next five years will be the two major factors carrying you toward your goal. Life will challenge you in the future as it has challenged youth in the past, but don't forget, American ends in "I CAN."

Determination, hard work, and the will to win will carry you far toward your goal. But, as you journey be ready and willing to extend the "Helping hand" to others as they journey along "Life's Highway" with you.

We get an education so that we will be able to do more work in less time, thus being of greater service to mankind. Again I challenge you; will you be where you want to be ten years from now?

DAVID S. FRYE,
Superintendent

Greetings to the students of Brighton High School, past, present, and future. For we need the help of all to make our school a place in which boys and girls may be trained to become efficient men and women of our community, state and nation.

For the class of '39 life is just beginning. You have had your opportunity to acquire the essentials requisite to a life of service to your fellow men, both at home and abroad. Whether or not you have mastered these fundamentals will be evinced by the physical, mental, and spiritual standards by which your living is gauged. What ever your degree of success has been in high school, continue to strive toward the biggest and better things of life by pursuing that insatiable quest for knowledge.

Those of you who have not discovered your place of service, take inventory now. Let no Brighton High School student either be turned from his course by flattery, or criticism, or be found slackening his struggle for the right. Above all, refuse to allow the call to passing fancies to "double cross" the man or woman you hope to become.

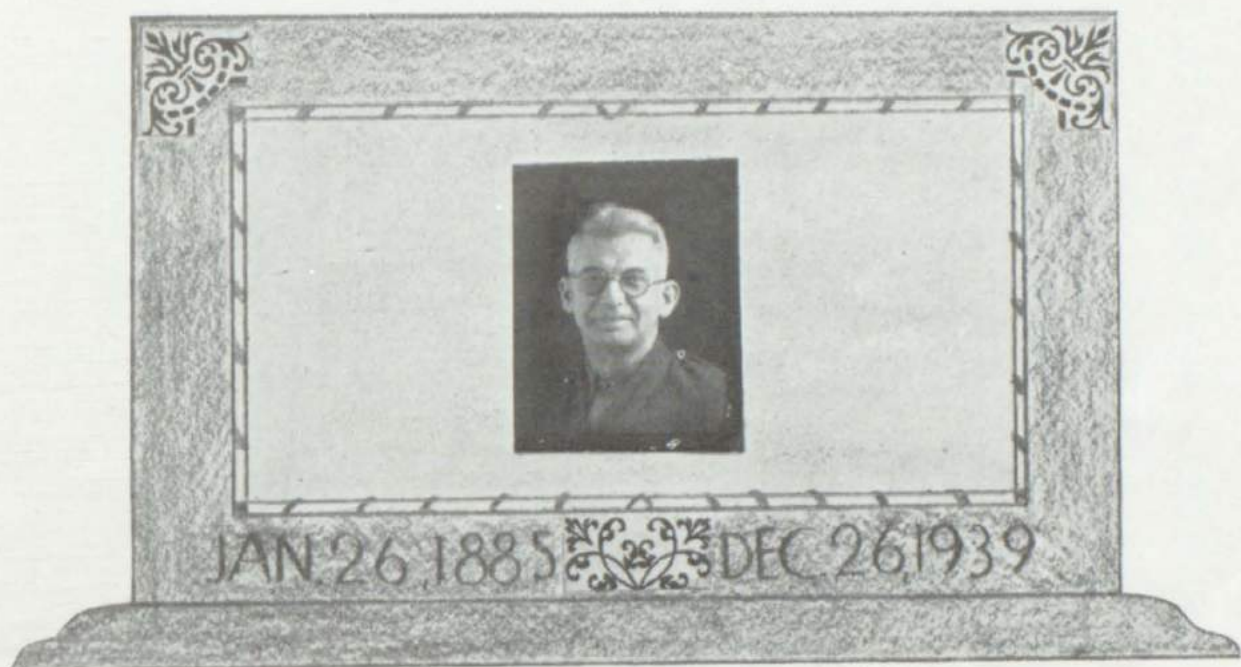
HARLAN JOHNSON,
Principal





FACULTY

MR. DAVID S. FRYE, Superintendent, Biology	- - - - -	C. S. T. C.
MR. HARLAN JOHNSON, History, Latin, Principal	- - - - -	Adrian C.
MISS HILDRETH CLARK, English and Literature	- - - - -	M. S. N. C.
MISS MARY KULISH, Commercial	- - - - -	C. S. T. C.
MR. RAYMOND GRABLES, Industrial Arts, Coach	- - - - -	M. S. N. C.
MISS RUTH ERWAY, Home Economics, Art	- - - - -	W. S. T. C.
MISS MABEL FRY, Junior High, Coach	- - - - -	M. S. N. C.
MR. RAYMOND WESTGATE, Junior High, Music	- - - - -	Adrian C.
MR. DALE BEMIS, Science, Higher Math	- - - - -	W. S. T. C.
MISS VIRGINIA CALLOW, Junior High	- - - - -	U. of M.
MISS VIOLA HEILIG	- - - - -	Sixth Grade
MISS CATHERINE HARTMAN	- - - - -	Fifth Grade
MISS FRANCES KELLER	- - - - -	Fourth Grade
MISS RUTH WATSON	- - - - -	Third Grade
MISS MARION McCLEER	- - - - -	Second Grade
MISS THERESA WOOD	- - - - -	First Grade
MISS MADGE McCAULEY	- - - - -	Kindergarten
MISS LILLIAN OLDHAM	- - - - -	Secretary to Superintendent



In Memoriam

Mr. Frank Richman passed away suddenly during Christmas vacation. He had been in the service of the Brighton Public Schools for eight years, and is missed by all who knew him as a real friend.



First Row—Ray Carmack, Zara Gibson, Sally McClure, Dorothy Phillips, Priscilla Luce, Noreen Brogan, Charles Brady. Second Row—Wilfred Green, Miriam Bills, Janet Allen, Lillian Oldham, Mary Ann Aulgar, Ruth Devereaux, Robert Coupar.

ANNUAL STAFF

EDITOR-IN-CHIEF	- - - - -	PRISCILLA LUCE
ASSISTANT EDITORS	- - - - -	MARY ANN AULGAR RUTH DEVEREAUX
CARTOONIST AND ASST TYPIST	- - - - -	SALLY McCLURE
BUSINESS MANAGER	- - - - -	CHARLES BRADY
ASST BUSINESS MANAGERS	- - - - -	WILFRED GREEN, RAY CARMACK
SALES MANAGER	- - - - -	DOROTHY PHILLIPS
ASST SALES MANAGER	- - - - -	MIRIAM BILLS
BOYS' SPORT REPORTER	- - - - -	ROBERT COUPAR
SENIOR REPORTER	- - - - -	ZARA GIBSON
JUNIOR REPORTER	- - - - -	NOREEN BROGAN
SOPHOMORE REPORTER	- - - - -	JANET ALLEN
FRESHMAN REPORTER	- - - - -	SALLY McCLURE
JUNIOR HIGH REPORTER	- - - - -	ZARA GIBSON
TYPIST	- - - - -	MISS LILLIAN OLDHAM
OTHERS SUBMITTING MATERIAL	- - - - -	MARION MILLAR, WILMA KOURT BETTY ROBBEN, FLORENCE ST. ARNO



James Salisbury
President



Charles Sheffer
Vice President



Harlan Johnson
Senior Class Advisor



Mary Ann Brady
Secretary



Mary Alice Clark
Treasurer



Ted Carmack



Paul Davis



Frank Fields



Virgilne Finley



Lyka Hartman



Ruth Hall



Mary Hartman



Paul Mohenberger



Maxine Herbst



Robert Kourt



Harold Keith



Betty Luce



Rupert Mitchell



Howard McLaughlin



Jack Pelko



Lyke St. Anno



Harold Roush

Absent



Clara Ellen Schaffer

Lawrence O'Dell

Bruce Dyer



Vivian Standick



Morace Taylor



Donald Warner

Following the Seniors Throughout Their High School Years



Seeing it's such a beautiful afternoon and if you aren't too busy, why don't you come with me, back to the time when the "Seniors" first entered high school. Here's some seats in the back of the room where the freshmen of 1935 are holding their first class meeting.

They have elected the same class officers they had in the eighth grade, with Jim Salisbury as president, Chuck Sheffer as vice-president, Mary Alice Clark as treasurer, and Mary Ann Brady as secretary. Miss Harriett Cornell as class advisor. Well, now that everyone is elected, we will leave them for they are getting along a little later in the year.

Here it is the end of the first semester already, just think how fast time flies. Well what's this that's happening to the Freshmen of 1935 now? Miss Harriett Cornell, their class advisor, is leaving and Mr. Harlan Johnson is taking his place as Freshmen class advisor.

They seem to be getting along splendidly with their new class advisor for you can't go any place that a freshman doesn't ask you to buy an orange pencil with the words Brighton High School on it, and seeing it's the end of the year they have decided to go to Walled Lake for a rest.

It's September now and here are the last year's freshmen promoted to Sophomores. They have the same class officers and for class advisor Mr. Edwin Ensign.

Well, didn't we have a wonderful time at the card party the Sophomores gave and I think I heard someone say something about starting to work on the Brightonian, didn't you?

It must have been time because the first edition of the Brightonian was sold today after much work and expense writing it so let's give them a rest till next September.

They are Juniors now and there is a lot of work to do. They are starting the year with the same class officers and Miss Ruth Erway as class advisor. They started the year with a bang by giving the Seniors a party and sponsoring some shows. As the year progresses we see them working very ambitiously making tulips and windmills for the J-Hop which was a semi-formal dance. I forgot to mention they sold football pennants and pencils with football and basketball schedules on them, and so ends the Junior year.

The next time we see them they are Seniors, the Class of '39, with their same class officers and Mr. Johnson as class advisor. This is a busy and very important year in their life. Here are some of the things we see them doing: Sponsoring a skating party, selling Christmas wreaths and pencils. Oh yes, they had their pictures taken, which was a hard job for the girls to have their hair look right and the boys to see that their ties were straight for a change.

What are they doing now? Oh yes, they have decided on their class motto: "Today we follow, tomorrow we lead." Class Flower, White Gardenia; Class Colors—Blue and Silver.

We will leave the Seniors here and go back to our regular routine, but I'm sure we all wish them success after they leave Brighton High School to go out to something not quite so certain.

DO YOU AGREE?

	FAVORITE SAYING	PROPHECY	PET PEEVE
Mary Ann Brady	I'm in a whiz	Art Teacher	Getting A's
Mary Alice Clark	Listen, Kid	Raising chickens	Farmer's wife
Ted Carmack	You bet!	Theatre Manager	Pitching woo
Paul Davis	Oh Shecks!	"Singer"	Strutting
Frank Field	For lands sakes	Window washing	Girls
Vergiline Finley	Not on your tin	Ideal secretary	Darning socks
Ruth Hall	Yeah!	Keeping house	New boy friend
Lyle Hartman	Oh, yes	Working for D.S.R.	Pool Room
Mary Hartman	Shucks	Girl's coach	Gym classes
Paul Hohenberger	Oh Yeah!	Another Fred	Driving
Maxine Herbst	You don't say	Astaire	Vamping
Bob Kourt	Gee, Whiz	"Advice to the Lovelorn"	Sore feet
Pete Leitz	Hi, Babe	Cop	Silly people
Betty Luce	Honey, do you know what	Circus Clown	Watching parks
Rupert Mitchell	I can't think	Cleaning pipes	Chasing tennis balls
Bud O'Dell	Please don't	Tennis champ	Opening detour
Jack Pelkey	I hate that guy	A ranch out west	Writing themes
Harold Roush	Sure	Admiral Pelkey	Skipping school
Lyle St. Arno	Oh	A girl at every port	Hitler vs Democracy
Jim Salisbury	Tch, Tch	On the high seas	Baton twirling
Clara E. Schaffer	Oh, dry up	Coach at Chilson U.	Watching Don W.
Chuck Sheffer	Go away, you draw flies	Editor of Gossip column	Dancing
Vivian Standlick	Could Be	Future Robt. Taylor	Being talked about
Horace Taylor	Well Shore	Dietician	Future farmer
Don Warner	Oh, Well!	Bar Tender	Dancing
Howard McLaughlin	So help me!	Trucking Business	Same old song
		Vocalist	

"SENIORS"

The Seniors have studied and waited long
 Gone through high school, grouped in a throng,
 Ready to leave with a courageous heart,
 Bidding farewell when they'll depart.
 Their work is finished and school life gone,
 Yet it took patience to wait that long;
 But some will lead in a business life,
 In spite of foes and endless strife.
 So let us give the Seniors a cheer,
 When their high school ends this year,
 And show them we are hoping success,
 Wherever they go, whatever the test.

ROY WHITE

SOCIAL LIGHTS

"Now be sure to say 'please' and 'thank you' and not 'sure' and 'tanks' tonight at the party," said John Average's mother as he left for a gay time at the Halloween Dance, sponsored by the Business Men of Brighton, on the night of ghosts and goblins in the year 1938 at the High School Gymnasium.

"Not a creature was stirring, not even a mouse," at the Christmas assembly on December 24, when the merry ceremonies were being carried out, but when each saw his gift, well, was it quiet? What do you think?

"I never told a lie, gee, I don't want to break your heart papa, but, well, I cut down your cherry tree," said George Washington, and in commemoration of the famous man the Seniors gave a real honest-to-goodness dance. With everyone swinging out in rhythm to Jerry Beissel's orchestra, and they glanced about approvingly at the red, white and blue hatchets and flags doing their duties as decorations.

Chinka cha-loo cha-loo cha pan oll lippy all lippy China-man—I mean "China Boy" and so did the Juniors when they so wonderfully produced their class play under the clever direction of Brighton's Cecil B. de Mille, Mr. David S. Frye, and assistant director, Miss Ruth Erway. Didn't you see it? You don't know what you missed.

"Elmer, Elmer, get that dog out of here," cried Jeanee and poor Elmer, what else could he do, always being picked on? I guess he showed us what he'd do in the play "Elmer" given at the Box Social sponsored by the Band Boosters Club on April 12. What delicious boxes, what entertainment, what an evening.

Skaters Waltz, truck and shag when they glide out on the floor of Island Lake Roller Rink, especially when those ambitious Seniors are sponsoring a skating party as they did on May 2 of this year and what a success it was. Don't you agree?

"Heaven, I'm in Heaven!" Oh! no you're not! You're in a Japanese garden swaying to the music of Jerry Beissel's orchestra on May 19. You are attending the Junior Prom given to our class of '39 by our class of '43, but don't let me stop you. Just "truck on."

Many thanks to our grand faculty and school board for permitting us to have such gay times in and outside of school time.



UNDERGRADUATES
OF 1939





First row—Dorothea Lathers, Marilyn Reed, Frances Krause, Betty Brogan, Ilene Timmons, Barbara Wietzke, Marion Pless, Miss Erway, Ruby Burton, Mildred Keehn, Thelma Bidwell, Josephine Frances, Winifred Crout, Noreen Navarre. Second row—Dale Pearsall, Jonathan Musch, Fred Russell, Royal Mitchell, Richard Curtis, Harold Richards, Roy Thomas, Russell Morgan. Third row—Kirby Hall, Charles Padley, Chester Sak, Wm. McMacken, Ralph Nauss, Don Burniac, Warren Rutter.

JUNIORS

PRESIDENT	- - - -	JONATHAN MUSCH
VICE-PRESIDENT	- - - -	HAROLD RICHARDS
SECRETARY	- - - -	MILDRED KEEHN
TREASURER	- - - -	ROBERT LEITH
CLASS ADVISOR	- - - -	MISS RUTH ERWAY
STUDENT COUNCIL	- - - -	NOREEN NAVARRE
		ROYAL MITCHELL
CLASS FLOWER	- - - -	LILY OF THE VALLEY
CLASS COLORS	- - - -	LAVENDER AND WHITE

"Am I ever glad to be home with friends again and, mother, did I ever say my prayers today that no one would speak to me. I would have died if they did." This is the way I felt on the night of my entrance into high school in 1936. That bashfulness all left me and my classmates when we began to learn sales talks by selling magazines. Yes, we sold \$122.00 worth.

"Oh, mother, I was so glad to be back in school this morning after that long summer vacation. What a difference time can make, even one year's time." Mr. Ray Grables, our honorable class advisor, explained to us about our first big responsibility, the editing of the "Brightonian." We shouldered this responsibility and with the aid of our staff made a success of it.

"Mom, we're old, aren't we?" Yes, so old that its not fun to enter school again with the same old enthusiasm of the past two years, but we love it just the same. Today we picked out class rings under the assistance of Mr. Grables' successor, Miss Ruth Erway. These are to be tokens by which we can remember undoubtedly the happiest days of our lives. Can you ever forget our trip to Lansing and tour through the dormitories and our visit to Jackson prison.



First row—Lillian Kourt, Noreen Brogan, Edna Parrot, Rosemary Burton, Betty Robben, Sally McClure, Priscilla Luce, Dorothy Phillips, Miriam Bills, Miriam Millar, Janet Allen, Dorothy Wietzke, Wilfred Green. 2nd row—Wilma Kourt, Zara Gibson, Frances Seger, Jeanette Otten, Mary Ann Aulgar, Mr. Westgate, Ruth Devereaux, Nellie Bogan, Dorothy Knight, Florence St. Arno, Doris Singer, Velna Miller, Lois Wright Jack Sherman. Third row—Jack Leffers, Gerald Thompson, Charles Brady, Jack Vogt, Robert Petz, Clayton Dundas, Robert Cameron, Robert Couper, Wayne Brown, Charles Bair, Roy White, Herman White, Ray Carmack, Robert Leitzau.

SOPHOMORES

PRESIDENT	CHARLES BRADY
VICE-PRESIDENT	SALLY McCLURE
SECRETARY	PRISCILLA LUCE
TREASURER	LILLIAN KOURT
STUDENT COUNCIL	RUTH DEVEREAUX
	THOMAS LEITH
CLASS ADVISOR	MR. RAYMOND WESTGATE

Just green eyed Freshmen, that's all we were this fall of '37 when we entered high school and elected Russell Housner as our class president, but even so we paid our dues each week and sold Curtiss magazines to enlarge our treasury. What an applause we got for the radio program we put on for the high school last year. Such fun!

"School days, school days, dear old golden rule days." That's what we smart Sophomores sang as we happily walked into the open doors of Brighton High School September 6, of 1938. Soon the "Jitterbugs" of Brighton swung out to a gala Halloween shin-dig put on by we, the class of '42. What fun we had under the advice of Mr. Raymond Westgate, who succeeded Miss Hildreth Clark and Miss Cecilia Johnson to the throne of "Class Advisor." Again we sold magazines to raise money, but topped everything off by a big success of this edition of the Brightonian. Thanks to our class officers, advisors, and cooperation of all classmates in putting over everything we have attempted this year and hope to attain next year.



First row—Charles Lang, William Albrich, Oral White, John Wenzel, J. C. Roberts, Alfred Schreer, Robert Phillips, Jack Thomas. Second Row—Rosemary Miller, Dorothy Terry, Phyllis Bowers, Sherrel Howard, Violet O'Dell, Mary Bergin, Alice Robben, Evelyn Richmond, Grace Meyer, Helen Geer, Eveleen Dreasky, Joyce Shapero. Third Row—Eugene Riedel, John Paul Lathers, Dick Leitz, Robert Garland, Clifton Geer, Miss Kulish, Robert Leech, LaVerne Antieau, Arthur Cesters, Robert Warner, Donald Sandlick. Fourth Row—William Hodges, Clarence Chapman, Wilson Yanson, Donald Carney, Charles Smith, Harold McMacken, Clyde Kirk, John Hauer, Robert Pelkey, Henry Green, Douglas Davis.

FRESHMEN

PRESIDENT	ROBERT PHILLIPS
VICE-PRESIDENT	SHERREL HOWARD
SECRETARY	ROBERT SINGER
TREASURER	MAJEL CROUT
CLASS ADVISOR	MISS KULISH
CLASS FLOWER	WHITE ROSE
CLASS COLORS	GREEN AND WHITE

Gosh, were we scared when we saw that study hall full of people and didn't know anyone. Oh, I hope I never see or experience that again!

Class elections are to be held today. Guess I'll just raise my hand and hope I vote for a good officer. Robert Phillips and Sherrel Howard are elected president and vice-president, respectively. At least the names sound good, don't they?

Ah, green and white are our class colors, and the fragrant white rose is our flower. Since we're just beginning high school life, we haven't acquired enough philosophy to compose a good motto but we'll get one and until we do "We'll do or die getting to the top in everything."



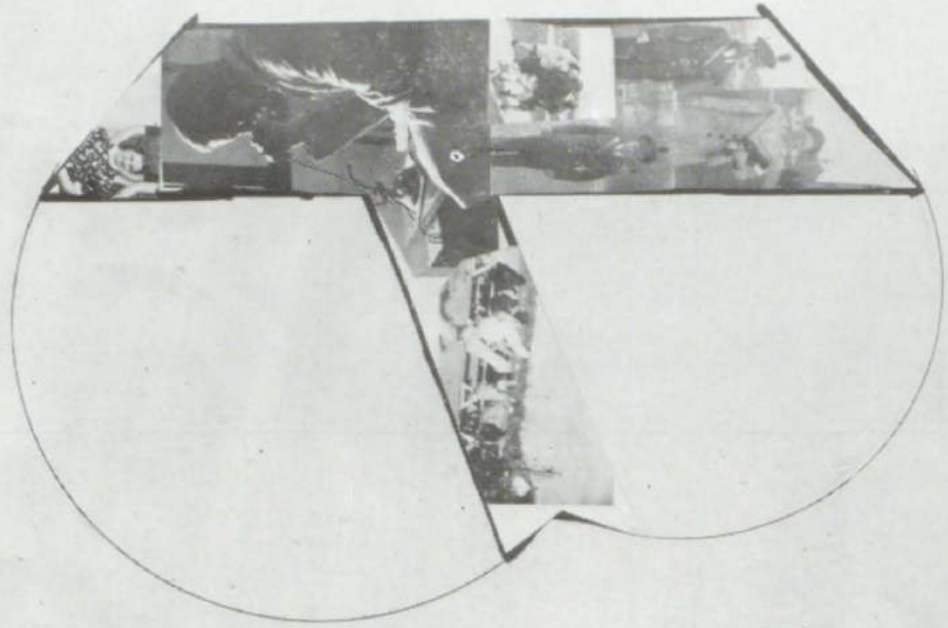
JUNIOR HIGH

	EIGHTH GRADE	SEVENTH GRADE
PRESIDENT - - -	HAROLD JARVIS -	THOMAS MITCHELL
VICE-PRESIDENT - -	KARL LEHMAN - -	JOYCE DICKINSON
SECRETARY - - -	RICHARD JUIPE - -	-
TREASURER - - -	HELEN McMACKEN - -	-
SECRETARY-TREASURER - - -	- - - - -	DONALD LEITH
CLASS ADVISOR - -	MISS FRY - - - -	MISS CALLOW

Since the school year is drawing to a close we think we should let you in on some of the things we did during the year.

We started out with a bang by having a skating party in October. As the year progressed we had a sliding down hill party at Bunker Hill. Late in February the girls had a volley ball tournament. When March rolled around we decided to have a ping-pong party. It was loads of fun! May 8 we had another skating party at the Island Lake rink.

The school year will be climaxed by a picnic June 9.











MARCHING BAND

The marching band displayed their enthusiasm last fall by marching at football games at home as well as every out of town game. The marching band started with 24 members and before the end of the year had as its membership 72.

The band was lead by its drum major, Paul Davis. This was Paul's first year, and he did a very fine job. Four girl twirlers were added this year, they were Priscilla Luce, Dorothy Phillips, Sally McClure and Lillian Kourt. This year special formations were made on the field.

The band was selected to go to the Michigan Blossom Festival at St. Joseph for a parade, and the Memorial Day parade at Brighton, as well as the Michigan State Fair at Detroit.

New uniforms were purchased by the Band Booster Club and the School Board. The Band added much pomp and fanfare at athletic events while they also showed much color and spirit.



CONCERT BAND

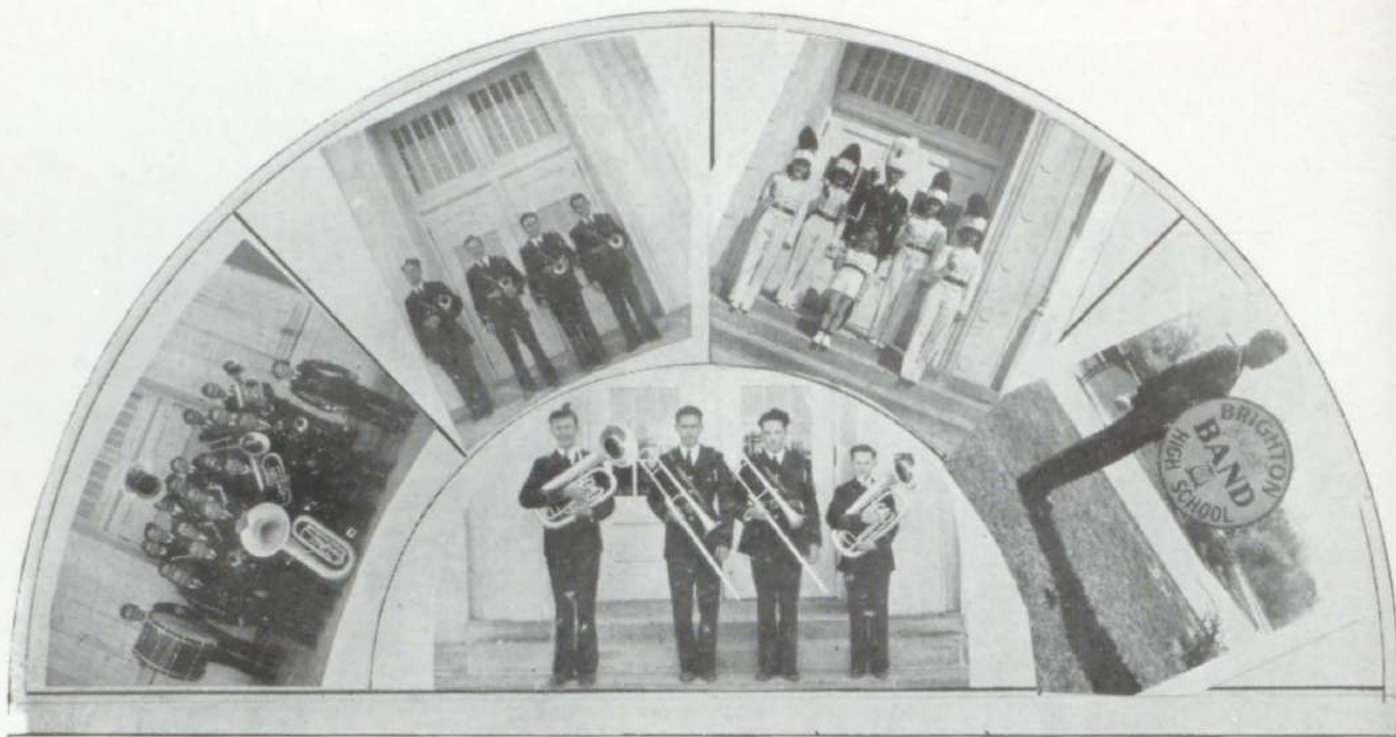
The concert band met the first day of school and with eight graduates gone from its ranks, started on its way for the year's work. We immediately started looking for clarinet players and better instruments for our band.

All music played this year was from the national Class C list and also some fine works by noted composers.

Several small ensembles furnished music regularly for many community functions, some of which were cornet quartet including Tom Leith, Bernard Kourt, Ray Carmack and Robert Singer, and a clarinet quartet composed of Majel Crout, Marilyn Reed, Doris Singer and Helen Geer. A number of soloists represented Brighton at a solo festival held in Clinton, Michigan.

Paul Davis and Doris Singer were chosen for the Michigan All State Band.

The band gave concerts during the year and entered the State Band and Orchestra Festival at Ann Arbor in April, receiving a very good rating and fine comments from the judges. The band will play concerts all summer in Brighton and are looking forward for another successful year.

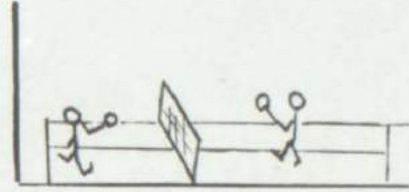
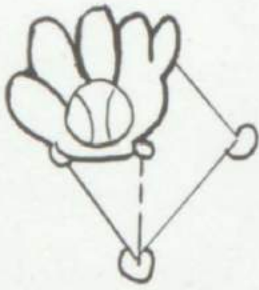


BAND

Charles Alston
 La Verne Antieau
 Leo Antieau
 Ruth Avis
 Raymond Bidwell
 Thelma Bidwell
 Evelyn Bills
 Beverly Borst
 Betty Brogan
 Noreen Brogan
 Elsa Brown
 Barbara Cameron
 Ray Carmack
 Donald Carney
 Horace Conely
 Thomas Chapman
 Clarence Chapman
 Majel Crout
 Winifred Crout
 Paul Davis
 Joyce Dickenson
 Wendell Frye
 Maynard Gardner
 Robert Garland

Clifton Geer
 Helen Geer
 Wilfred Green
 Hilda Herbst
 Mildred Herbst
 William Hodge
 Wesley Housner
 Sherrel Howard
 Evelyn Kingsley
 Bernard Kourt
 Lillian Kourt
 Richard Juipe
 Preston Jones
 Charles Lang
 Jack Lang
 Glenn Lehman
 Karl Lehman
 David Leith
 Donald Leith
 Thomas Leith
 Robert Leith
 Richard Leitz
 Priscilla Luce
 Sally McClure

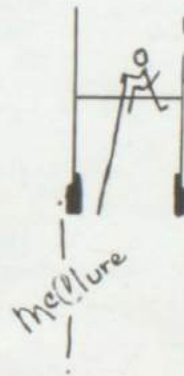
Norma Miller
 Thomas Mitchell
 Ted Morgan
 Douglas Pearsall
 Estella Pless
 Marian Pless
 Josephine Pless
 Dorothy Phillips
 Robert Phillips
 William Pitkin
 Janice Pitkin
 Hugh Prosser
 Marilyn Reed
 Walter Schreer
 Doris Singer
 Fred Singer
 Robert Singer
 Charles Smith
 Bernice Symonton
 Roy Thomas
 Jack Thomas
 John Wenzel
 Betty Wahl
 Dorothy Wietzke



ATHLETICS



BHS





Bud O'dell, Pete Leitz, Dale Pearsall, Chuck Sheffers, Chuck Brady, Robert Leith, Jimmy Salisbury, Ralph Nauss, Horace Taylor, Chet Sak, Harold Roush, Bill McMacken, Lyle St. Arno, Lyle Hartman, Donald Warner, Coach Grables.

FOOTBALL

THE SCENE - - - - - B. H. S. FOOTBALL GRIDIRON
 THE TIME - - - - - SEPT. 3, 1938, 4 P. M.
 FINAL ACT - - - - - BRIGHTON 29, HOWELL 0

This ended a wonderful start for what promised to be a successful season with the heaviest Brighton line in history, the smartest and fastest backfield, and two of the best ends in our league. These assets added up to 100%, but the rest's always a joker somewhere, and it seemed to be in more than one form. First, after defeating Howell, who was our worst rival, a Class B school, things went wrong. The players themselves are to blame for overconfidence, jealousy among the players, lack of cooperation with our fine coach, and also that main fact, the lack of the good old High School "try." After tying Milford, the team we had beaten in the locker room, we seemed to snap up for the next two games. We won from Walled Lake and South Lyon by identical scores of 31-0. This again seemed to be our downfall and we tied one of the, if not the weakest team in our league—Clarkston—7-7. From there on the scores went against us. Keego Harbor 0-12, Farmington 0-12, a close game that by all rights was ours, but the score was against us, Holly 7, Brighton 6.

This closed our football season, taking with it ten Seniors by graduation.

Our team was honored by a football banquet at the Graham Hotel, and guest speaker was Clarence Munn, line coach for U. of M.

SUMMARY	B.	OPP.	PLAYER	Points	Yds.
Points	110	44	Pearsall	37	765
First downs	69	26	Sak	24	467
Passes completed	64	15	B. McMacken	15	321
Passes intercepted	5	11	Roush	6	
Passes attempted	108	48	Leitz	13	97
Penalties, yds.	275	90	Hartman	6	22
Blocked points	3	7	Sheffer	6	38
Yards gained by rushing	1860	760	Salisbury	1	
			Hall	0	83
			Brady	0	56
			O'dell	0	15



BASEBALL

The B. H. S. baseball teams' prospects for the season of 1939 are quite promising, due to the fact that the pitching staff is supported by 10 members.

Those out for baseball are as follows:

PITCHERS	CATCHERS	H. McLaughlin	OUTFIELDERS
J. Salisbury	R. Nauss	W. Rutter	C. Sak
H. Green	L. Hartman	B. Kourt	L. O'Dell
R. Leith	K. Hall	C. Brady	H. Leitz
R. Cameron	R. Curtiss	R. Coupar	R. Warner
C. Padley		T. Leith	R. Singer
C. Chapman	INFIELDERS	D. Juipe	Leo Antieau
D. Wright	L. St. Arno	R. Pelkey	Laverne Antieau
B. McMacken	D. Pearsall		J. Musch
H. McMacken	C. Sheffer		

SCHEDULE

	HERE			THERE	
April 17	-	-	Dexter	April 21	- - - Walled Lake
April 25	-	-	Pinckney	April 25	- - - Fenton
May 1	-	-	Keego Harbor	May 5	- - - Holly
May 19	-	-	Clarkston	May 9	- - - New Hudson
May 26	-	-	Milford	May 12	- - - Farmington
May 31	-	-	Hartland	May 16	- - - Pinckney

April 26—Tri-Angular meet—Brighton, Walled Lake and Milford at Milford.



Dale Pearsall, Ralph Nauss, Chester Sak, Harold Roush, Lyle Hartman, Charles Sheffer, Harold Leitz and Coach Grables.

BASKETBALL

The Brighton High School team finished its most successful season in the last number of years by outscoring their opponents 313 points to 312 points as against last year's Brighton 263, opponents 284.

The scores of the games were as follows:

FIRST TEAM		Second Team	
Brighton, 26	- Fowlerville, 8	Brighton, 20	- Milford, 36
Brighton, 15	- Webberville, 30	Brighton, 25	- Pinckney, 11
Brighton, 28	- Milford, 30	Brighton, 16	- New Hudson, 23
Brighton, 27	- Pinckney, 17	Brighton, 14	- Saline, 17
Brighton, 15	- New Hudson, 28	Brighton, 11	- Y.M.C.A., 12
Brighton, 13	- Saline, 27	Brighton, 9	- Pinckney, 11
Brighton, 19	- New Hudson, 24	Brighton, 8	- New Hudson, 11
Brighton, 28	- Pinckney, 10		
Brighton, 18	- Y.M.C.A., 25		
Brighton, 45	- Y.M.C.A., 19		
Brighton, 29	- Y.M.C.A., 30		

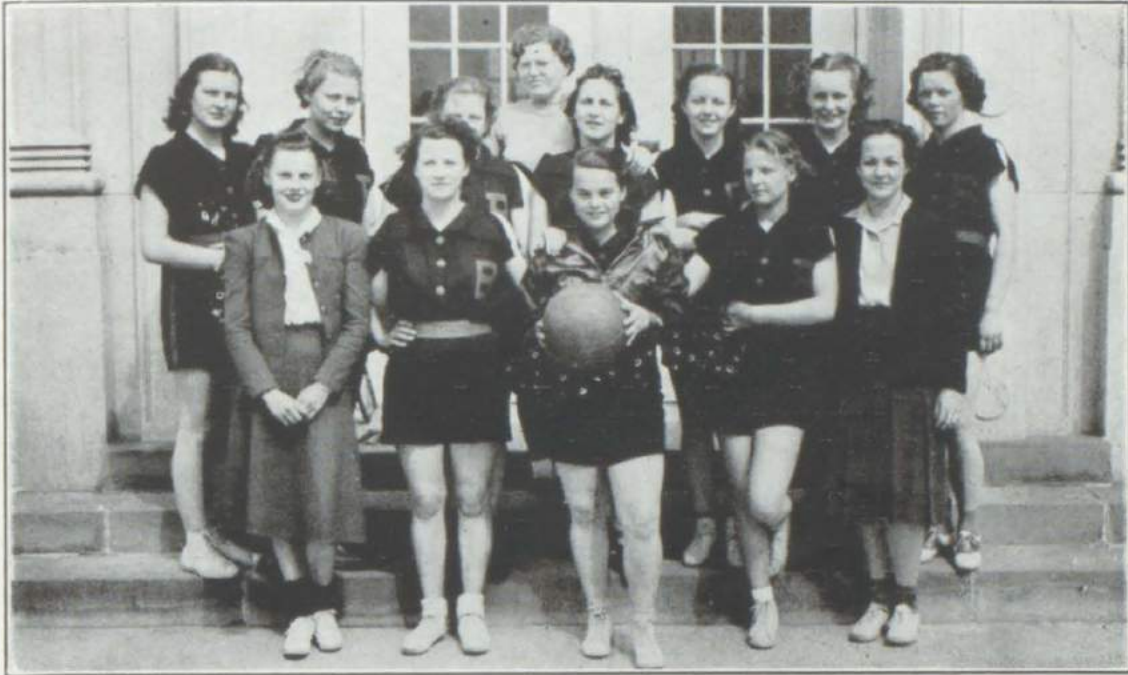
TOURNAMENT

The district tournament, annually held at Milford, was won by Keego Harbor. Brighton drew two of the strongest in the tournament and the black and orange made a good showing at both games, winning the first—Brighton 33, Holly 31, but losing the second, Brighton 18, Keego Harbor 43. Brighton for the first time made the finals and though they did not win made a very good showing.

FIRST TEAM					
	FG	FT	Total		
x Lyle Hartman	44	20	108	o D. Warner	26
x C. Sheffer	38	9	71	o K. Hall	21
x D. Pearsall	22	17	61	o R. Curtiss	14
x C. Sak	8	4	20	o L. St. Arno	12
x J. Salisbury	6	6	18	o J. Wenzel	12
x H. Leitz	5	5	15	o T. Carmack	10
x R. Nauss	5	4	14	o C. Chapman	3
x H. Roush	2	2	6	*R. Coupar	2
				o H. Green	2
				o C. Padley	1
				* D. Juipe	
				* G. Thompson	0
				* R. Phillips	0

LETTERS

x First Team
o Second Team
* Honorable Mention



First Row—Dorothy Phillips, Vivian Standlick, Winifred Crout, Dorothy Terry, Priscilla Luce. Second row—Miriam Bills, Violet O'dell, Mary Hartman, Miss Fry, Ncreen Navarre, Jeanette Otten, Doris Singer, Ilene Timmons.

GIRLS' BASKETBALL

"Yea Brighton, Yea Brighton, Fight Em, Fight Em, Fight Em", cheered the many Brighton rooters as point after point was made in our gain. Although we had our share of defeats, some one had to win, didn't they? "We'll take 'em all next season." Don't you think with that spirit we should?

All dressed up and a basketball banquet to go to in the private dining room of the Graham Hotel. Such beautiful flowers everyone received and how "cute" the programs are. Congratulations to Miss Fry for making this first banquet possible and such a great success.

The girls on the basketball teams would like to express their thanks to Dorothy Phillips for being referee and time keeper at so many of their games. She did a splendid job and showed no preference to either team.

SENIOR SYNOPSIS

Mary Ann Brady	- - - - -	Basketball 1, Dramatics 3, Operetta 1
Ted Carmack	- - - - -	Football Reserve
Mary Alice Clark	- - - - -	Basketball 1-2
Paul Davis	- - - - -	Band 1-2-3-4, Basketball 2
Virgiline Finley	- - - - -	Basketball 1-2, Operetta 2
Lyle Hartman	- - - - -	Basketball 2-3-4, Baseball 3-4, Football 2-3-4
Mary Hartman	- - - - -	Basketball 1-2-3-4, Operetta 1
Maxine Herbst	- - - - -	Basketball 1-2, Operetta 1
Harold Leitz	- - - - -	Football 2-3-4, Basketball 1-2-3-4, Baseball 1-2-3-4, Track 2-3-4
Betty Luce	- - - - -	Basketball 1-2
Lawrence O'Dell	- - - - -	Football 3-4, Baseball 3
Jack Pelkey	- - - - -	Basketball 1, Operetta 2
Robert Kourt	- - - - -	Football 4
Harold Roush	- - - - -	Football 2-3-4, Basketball 2-3-4
Lyle St. Arno	- - - - -	Football 3-4, Baseball 3-4, Basketball 4
James Salisbury	- - - - -	Basketball 1-2-3-4, Baseball 1-2-3-4, Football 1-2-3-4
Clara E. Schaffer	- - - - -	Dramatics 3, Operetta 1, Track 1
Charles Sheffer	- - - - -	Dramatic 3
Vivian Standlick	- - - - -	Basketball 1-2-3-4, Baseball 1-2-3-4, Football 4
Horace Taylor	- - - - -	Basketball 2-3-4
Donald Warner	- - - - -	Football 2-3-4
Howard McLaughlin	- - - - -	Basketball 3-4, Track 3-4, Football 2-3-4, Operetta 1
Frank Fields	- - - - -	Football 4, Baseball 4
Paul Hohenburger	- - - - -	Operetta 1
Rupert Mitchell	- - - - -	Operetta 1

« Answers to Page 22 »

- | | |
|---------------------|--------------------|
| 1. Dale Pearsall | 12. Ilene Timmons |
| 2. Mary Alice Clark | 13. Winnie Crout |
| 3. Paul Davis | 14. Noreen Navarie |
| 4. Mary Hartman | 15. Maxine Herbst |
| 5. Harold Roush | 16. Ruby Burton |
| 6. Mary Ann Brady | 17. Lyle Hartman |
| 7. Marian Pless | 18. Mildred Keehn |
| 8. Virgiline Finley | 19. Bob Leith |
| 9. Marilyn Reed | 20. Elouise Gibson |
| 10. Fred Russell | 21. Dale Pearsall |
| 11. Charles Padley | 22. Ilene Timmons |

The 1939 Brightonian Staff

*wishes to express their gratitude to Mr. Clarence Pinney
for the developing and printing of the pictures used in our annual
also to Mr. Dale Bemis who photographed the various groups.*



JUNIOR EINSTEIN

About five weeks after the students of Brighton High School had harkened to the toll of the old school bell and had settled comfortably into the customary routine of two and two make four, a science minded few congregated in the laboratory to discuss possibilities of enhancing their mutual interests in science by banding together as a club. They extended an open invitation to all science students to attend a series of preliminary organizational meetings. On October 12, they selected Harold Leitz as temporary chairman and Robert Leith to take notes of proceedings. Meeting after meeting they struggled with the weighty consideration inherent in constitution making, selecting aims and ideals, making rules and regulations, and choosing a name and motto. Finally on Dec. 22, they inaugurated the Association of Junior Einsteins with a banquet at the home of Mr. and Mrs. Dale Bemis, science instructor, by signing the constitution, thus becoming charter members. The science club engineered an excursion to Park Davis Company, for all eligible science students. This concluded the first semester's activity.

On March 4, they visited the cyclotron and the observatory at the University of Michigan, the Ann Arbor Gas Company, and Police Department of the city.

On March 9, in accordance with their aim to promote interest in science in the community, they presented a program by the Detroit Edison Company about the development of illumination.

Ouch! It's April 12th, and only Paul Davis alone endured the grim tortures of the first informal initiation. On April 20, he became a full fledged member (at the formal initiation).

Besides observing the moon through telescopes, members have learned to develop and print pictures, and plan to investigate other scientific hobbies soon.

LAUGH-A-WHILE

THE SEVEN AGES OF WOMEN:

Safety Pins - Whip Pins - Hair Pins - Fraternity Pins - Diamond Pins - Clothes Pins - Rolling Pins.

Padley: "Say, fella, how did you like the girl I dug up for you?"

Salisbury: "Well, as far as I'm concerned you can bury her again."

"Order" yelled Coach Grables during a noisy Athletic Meeting.

Chef Sak, awaking from a short sleep answered, "Cheese sandwich and a coke."

Conversation between a Freshman and Senior:

Paul Davis: "I'd give \$5.00 for a kiss from a nice little innocent girl like you."

Rosemary Miller: "Oh! How terrible."

Paul: "Did I offend you?"

Rosemary: "No, I was just thinking about the fortune I gave away last night."

One night we overheard Mary Alice Clark praying. "Dear Lord, I ask nothing for myself, but please give mother a son-in-law."

Sophomore to Freshman

Wayne Brown: "You know you have to keep your eyes open around here."

John Paul Latherers: "Why?"

Wayne: "Because if you go around with them closed people will think you're crazy."

D. Pearsall: "Yep, she's a cash and carry girl."

B. McMacken: "How's that?"

D. Pearsall: "She's got the goods but won't deliver."

Clara Ellen Schaffer: "What's the color of a ghost?"

Don Burniac: "I don't know. What is it?"

Clara Ellen: "BOO!"

A Scotchman leaving on a trip was giving farewells and instructions to his family.

Scotchman: "Bye now, and don't forget to take Johnny's glasses off when he's not looking at anything."

Roush: "Say, let's teach that dumb blond across the street the difference between right and wrong."

Sheffers: "Okay, you teach her what's right."

Bob: "I suppose you dance."

Sherrel: "Yes, I love to."

Bob: "Great, that's better'n dancing."

Jack Pelky: "What are prayers, Mummy?"

Mrs. Pelkey: "Why they are little messages to God."

Jack: "Well, why do we always send them at night—to get cheaper rates?"

Miss Clark: "Bob, what's the meaning of the word 'marriage?'"

Bob Coupar: "Dad says it's not a word, it's a sentence."

Ted Carmack gave this poem in English Literature:

"Mary had a little lamp

A good one we won't doubt,

For every time that company came

The little lamp went out."

J. Salisbury was called in to give a quotation one day:

"Man's the hunter; woman's the game."

Betty Brogan: "In the Roman days it was the custom for girls to marry at 14."

Phylis Bowers: "Oh! To be a Roman! ! ! !"

Hohenburger: "I had an awful fright last night."

O'Dell: "Yes, I saw you with her."

If you slam the jokes we use,
You should see what we refuse.

Assistant Editors.

SENIOR TIDBITS

Did you know that Harold Roush has taken a liking to Jackson? Could it be the colorful cascades? We doubt it.

We wonder if Bob Kourt will go on with his chauffeuring between B. H. S. and the pool-room next year.

What if Howard McLaughlin heard a new song to whistle? Maybe he's heard different ones but just can't seem to get the knack of it.

We think that the song "Hold Tight" (which was popular early this spring) was written especially for the passengers in Lyle Hartman's car.

Do you know why Ruth Hall took a liking to a certain Freshman boy in this her Senior year?

Guess why Horace Taylor is taking mechanical drawing? Could it be to improve his residence to show to all of his city girl friends?

If Jimmy Salisbury takes to flirting with the Campus girls as he did with Home one's, he'll have his hands full.

What's going to happen to Frank Fields when he doesn't have Hohenberger to get him around on nice spring afternoons? Of course, Frank might have regretted it when he spent the next two days writing a short theme.

And, of course, every one knows who the Einstein of B.H.S. is. Yes, of course, it's none other than Pete Leitz.

We're worried about what will happen to Mary Ann and Mary Alice next year when they are separated. Maybe some arrangement will be made so they can see each other at least once a day.

Must be St. Arno, Pelkey and Hohenberger are tired of all the Brighton girls, they seem to like "a girl at every port".

We wonder why Clara Ellen's car liked to turn south-east early this spring. Could there be something interesting there? (Detroit) Could be ! !

Due to the fact that Maxine likes to drive so well we wonder if she'll be driving the ice truck next year.

Don Warner's one ambition is to be another Ralph Heikinen. We're all with you, go to it, Don.

We wonder what Betty Luce will be doing, keeping house or jerking sodas next year at this time.

No wonder Chuck Sheffer is such a man about town with all the ladies. Look at that famous ping-pong ability. Of course, that might (and probely doesn't) have anything to do with it.

Maybe two of our Senior girls (Mary Hartman and Vivian Standlick by name) will carry over the honors of the Brighton basket ball team. (Did I hear you say "what honors?")

If all the boys were like Bud O'Dell, Henry Ford would soon be cut of business. It's all right, Bud, horses may be slow but they get you thar.

We suppose that Ted Carmack will be taking a course at U. of D. or some school in the city. Well, it will save gas, Ted, and she'll like you near.

The only reason Paul Davis and Rupert Mitchell couldn't go into the pool-room business is because they'd eat up all their profits.

ALUMNI

CLASS OF '38

Don Zeilman	-	-	-	-	-	-	-	Whitmore Electric Service
Emma Herbst	-	-	-	-	-	-	-	Detroit Business Institute
Garnet Rolison	-	-	-	-	-	-	-	Cleary College
Hugh Munce	-	-	-	-	-	-	-	Michigan State College
Bill Richmond	-	-	-	-	-	-	-	Brighton, Michigan
Olive Shelton	-	-	-	-	-	-	-	Brighton, Michigan
Mary Catherine Paine	-	-	-	-	-	-	-	Hamburg, Michigan
Marian Beam	-	-	-	-	-	-	-	Jackson, Michigan
Leo Divine	-	-	-	-	-	-	-	Brighton, Michigan
Myrtle Knight	-	-	-	-	-	-	-	Brighton, Michigan
John Lybrink	-	-	-	-	-	-	-	CCC Camp
James Largo	-	-	-	-	-	-	-	Harland, Michigan
Dorothy Bidwell	-	-	-	-	-	-	-	Michigan State Normal College
George Schaffer	-	-	-	-	-	-	-	Michigan State College
Carl Bidwell	-	-	-	-	-	-	-	Brighton, Michigan
Betty Graham	-	-	-	-	-	-	-	Michigan State College
Ruth Kourt	-	-	-	-	-	-	-	Brighton, Michigan
Chester Clore	-	-	-	-	-	-	-	Brighton, Michigan
Bessie Robbin	-	-	-	-	-	-	-	Brighton, Michigan
Robert Roush	-	-	-	-	-	-	-	Brighton, Michigan
G. adys Hartman	-	-	-	-	-	-	-	Brighton, Michigan
Clayton Dundas	-	-	-	-	-	-	-	Hamburg, Michigan
Carmen Crout	-	-	-	-	-	-	-	Brighton, Michigan
Tom Schultz	-	-	-	-	-	-	-	Detroit, Michigan
Grace Simpson	-	-	-	-	-	-	-	Michigan State Normal College
Robert Morlan	-	-	-	-	-	-	-	Lawrence School of Technology

CLASS OF '37

James Petz	-	-	-	-	-	-	-	Detroit, Michigan
Jean Leith	-	-	-	-	-	-	-	Brighton, Michigan
Phil Young	-	-	-	-	-	-	-	Brighton, Michigan
Mary Beth Phillips	-	-	-	-	-	-	-	Alexander's Beauty School
Lyle McClements	-	-	-	-	-	-	-	Brighton, Michigan
Frances Ellis	-	-	-	-	-	-	-	Brighton, Michigan
Clifford Nauss	-	-	-	-	-	-	-	Hamburg, Michigan
Marion Keihl	-	-	-	-	-	-	-	Brighton, Michigan
Genevieve Prosser	-	-	-	-	-	-	-	Brighton, Michigan
Melvin Green	-	-	-	-	-	-	-	Brighton, Michigan
Esther Green	-	-	-	-	-	-	-	Brighton, Michigan
Virginia Harter	-	-	-	-	-	-	-	Detroit Business Institute
Leroy Warner	-	-	-	-	-	-	-	Detroit Business Institute
Myrtle O'Dell	-	-	-	-	-	-	-	Brighton, Michigan
Florence Wilkinson	-	-	-	-	-	-	-	Brighton, Michigan
Mary Maxine Holden	-	-	-	-	-	-	-	Brighton, Michigan
Una Wagenknecht	-	-	-	-	-	-	-	Brighton, Michigan
Bertha Schreer	-	-	-	-	-	-	-	Cleary College
Mildred Whalen	-	-	-	-	-	-	-	Cleary College
Wendall Clark	-	-	-	-	-	-	-	Detroit Business University
Doris Fitkin	-	-	-	-	-	-	-	Michigan State College
Fauline Allen	-	-	-	-	-	-	-	Michigan State Normal College
								Brighton, Michigan

Compliments of
Gottschalk Music House

Band Instruments Orchestra Instruments Band Uniforms
— Instrument Repairing —



“It has been a pleasure to help serve your fine band and have a part in your project for new uniforms.”

JOHN GOTTSCHALK

Solo and Ensemble Music

Band and Orchestra Music

All School Music Supplies

200 Washington

Lansing, Michigan

Telephone 59011

402 S. Winter

Adrian, Michigan

Telephone 1406

AUTOGRAPHS

INDEX

1. Preface
2. Dedication
3. Editorial
4. School and School Board
5. Superintendent and Principal
6. Faculty
7. Memoriam
8. Staff
9. Senior Class Officers
10. Pictures of Seniors
11. Pictures of Seniors
12. Following the Seniors throughout Their High School Years
13. Do You Agree Senior Poem
14. Social Lights
15. Undergraduates
16. Juniors
17. Sophomores
18. Freshmen
19. Junior High
20. Snap Shots
21. Snap Shots
22. Pictures from the Past
23. Music
24. Concert Band
25. Marching
26. Miscellaneous Band
27. Sports
28. Football
29. Baseball
30. Basketball
31. Senior Synopsis
32. Girls' Basketball
33. Science Club
34. Laugh-a-while
35. Senior Tid-bits
36. Alumni
37. Autographs
38. Autographs
39. Index
- 40-48. Advertisements

To the graduates of 1939.....

.....I Salute You!

DON'T

FAIL

TO

CARRY

ADEQUATE

INSURANCE

ON

YOUR

AUTOMOBILE



OFFERS
COMPLETE
PROTECTION

You will soon be taking your places in the world of activity and adventure. Heretofore your school life and surroundings have to a large extent been planned and regulated for you.

Planned to provide you with safety against accident and disease; planned to give you a thorough basic education, as insurance for your future livelihood, happiness and prosperity.

On graduating from Brighton High School you will be more "on your own". What you do and become will depend largely on your own efforts.

In the battle of life, it is essential that you guard against loss and damage and provide protection for yourself and loved ones. For these purposes, good insurance is essential.

Whether it be insurance on your life, your automobile or any type of protection you may need, I will be glad to give you every assistance.

511 HOPE ST.
BRIGHTON

ED. BOGAN

TELEPHONE 324
BRIGHTON

Insurance

"Truly Your Friend In Need"

AUTOMOBILE — FIRE — LIFE — SICK and ACCIDENT — WINDSTORM

**Graham Hotel
and Restaurant**

PRIVATE DINING ROOM
LUNCHES AND DINNERS

Phone 220

COMPLIMENTS OF
**SILVER CEILING
PRODUCE MARKET**

**WINKELHAUS
FLORAL CO.**

Choice Cut Flowers and Floral Designs
203 W. Grand River Ave.
HOWELL

DON W. GOODNOW

Howell, Mich. Phone 99

Ladies' and Gents' Ready-to-Wear

Garments, Floor Covering

Dry Goods

Shoes for the Family

**Wm. P. QUINN
CLOTHING STORE**

**TOM AND PAT'S
MARKET**

GROCERIES AND MEATS

Phone 52

We Deliver

COMPLIMENTS OF
DR. GERALD PELKEY

LEECH MOTOR SALES

Buick — Pontiac

'Nuf Sed

**The BRIGHTON
STATE BANK**

Brighton, Mich.

COMMERCIAL and SAVINGS
ACCOUNTS SOLICITED

Money to loan at reasonable rates
and upon satisfactory security

Member of the Federal Deposit
Insurance Corporation

Gowns - Frocks - Sportswear
Lingerie - Costume Jewelry

SALLY UDE SHOPPE

"First with the Newest"

EVELYN L. BARRETT, Proprietor

114 State Street

HOWELL, MICHIGAN

COMPLIMENTS OF

LELAND'S DRUG STORE

HOWELL SHOE SHOP

127 W. Main

Brighton

**SCRANTON
DRUG STORE**

COX'S MARKET

Best Wishes for Success

Martin J. Lavan

CITY ATTORNEY

BRIGHTON, MICH.

COMPLIMENTS OF
G. B. RATZ & SON

BRIGHTON HARDWARE

Congratulations and

Good Wishes to the

Senior Class

Henry P. Bidwell

HEATING AND PLUMBING

**FRED LOUIS
RIECKHOFF**

Four Years University Training
OPTOMETRIST
Rieckhoff Building
HOWELL

COMPLIMENTS OF
PAT'S CANTEEN

ISLAND LAKE

COMPLIMENTS OF
FONDA LAKE INN

James Dougherty Prop.

**WALLED LAKE
AMUSEMENT PARK**

SOUTHWESTERN OAKLAND
COUNTY BAND FESTIVAL

SATURDAY, JUNE 10

7 Bands — 305 Pieces

Brighton — Clarkston — Farmington

Holly — Keego Harbor — Milford

Walled Lake

Everybody Invited

PARK OPEN

EVERY DAY

FREE PICNIC GROUNDS

FREE PARKING

AMUSEMENTS

COMPLIMENTS OF
F. T. HYNE & SON

COAL LUMBER FEED

Brighton Phone 11F2

COMPLIMENTS OF
J. R. WYLIE SALES

HOWELL Phone 62

**WILSON'S
BARBER SHOP**

G. B. RATZ & SON

General Hardware

**VIRGINIA'S
BEAUTY SHOP**

CONGRATULATIONS TO
The Seniors

**KOURT
ELECTRIC SHOP**

**J. J. HERBST
PURE LAKE ICE**

BRIGHTON 67-F2

Established 1865 Incorporated 1915
Over 70 years of safe banking

**McPHERSON
STATE BANK**

HOWELL, MICH.

PURE ARTIFICIAL ICE

is purer than the water you drink

**BRIGHTON ICE
Service Co.**

PHONE 276

**LEW'S
SHELL SERVICE**

**BEURMANN'S
GIFT SHOP**

Brighton's Complete Food Market—

**KROGER GROCERY &
BAKING CO.**

Groceries - Meats - Fruits
Vegetables

CHET PAQUETTE—Meats

HAROLD McMACKEN - Groceries

JARVIS CLOTHING

CLOTHING SHOES

MEN'S WEAR

Brighton Michigan

**RICKETT JEWELRY
WATCHES FOR GRADUATION**

**ADAMS'
CLOTHING STORE**

Quality Merchandise

HOWELL, MICH.

BRIGHTON DAIRY

COMPLIMENTS OF
EDDIE'S LUNCH

COMPLIMENTS OF
**SUNBEAM
RESTAURANT**

Mrs. Chapman

COMPLIMENTS OF
**CAMP
"HOUSE ON THE HILL"**

Florence Noeker

Brighton, Mich. Phone 62-F5

COMPLIMENTS OF
**STRICK'S
CLOTHING STORE**
WOMEN'S READY-TO-WEAR

Brighton Mich.

COMPLIMENTS OF
GIBSON INSURANCE

**A. C. Stewart
and Son**

FLOUR AND FEED
— COAL —

Brighton Mich.

AL'S LUNCH

"A GOOD PLACE TO EAT"

DINNERS SANDWICHES
Al Juipe Leo Felty

COMPLIMENTS OF
**HARRY SEGER
Barber Shop**

COMPLIMENTS OF
A and P FOOD STORE
GROCERIES AND MEATS

Brighton Mich.

COMPLIMENTS OF
E. REED FLETCHER

COMPLIMENTS OF
LINE'S 5c to \$5.00 STORE
BRIGHTON

APPLETON'S SERVICE

PIPP'S FLORAL SHOP

COMPLIMENTS OF
**WILSON'S
BARBER SHOP**

COMPLIMENTS OF
LEW HUNT

COMPLIMENTS OF
DR. H. L. LEWIS

COMPLIMENTS OF
J. R. WYLIE SALES
HOWELL Phone 62

COMPLIMENTS OF
Beurmann's Gift Shop
Howell Mich.

PETE'S TRADING POST

Brighton's Exclusive Meat Market
CHOICE QUALITY
Peter Garduliski

STOP! SHOP! SAVE!

Byerly's Quality Food Market

Don Brady
Manager

Groceries-Meats

Max Morey
Assistant

COMPLIMENTS
— OF —

A. J. Burrell & Sons

ARTISTIC MEMORIALS
R. M. Charlesworth, Manager
Phone 31 Brighton, Mich.

**Patronize The
ADVERTISERS**

Rolison Hardware

Austin Shoe Shop

COMPLIMENTS
— OF —

F. T. Hyne & Son

COAL—LUMBER—FEED
BRIGHTON PHONE 11F2

J. A. Brady

FANCY GROCERIES AND MEATS
PHONE 44 431 W. MAIN
BRIGHTON, MICHIGAN

The Boylan Store

MILLINERY - DRY GOODS
LADIES' FURNISHINGS
PHONE 12

Murray Brothers

PHONE 9104
We Ourselves the Better Serve By
Serving Others Best.
BRIGHTON MICHIGAN

C. G. Conn, Ltd.

BAND INSTRUMENTS



WORLD'S LARGEST MANUFACTURERS
INSTRUMENTS ACCESSORIES
REPAIRS MUSIC



DETROIT BRANCH
1500 BROADWAY

TELEPHONE
RANDOLPH 1308

This Annual Produced
and Printed
by
THE BRIGHTON ARGUS



